



EV BUS IMPORTATION, HOMOLOGATION AND BUSINESS OPPORTUNITY

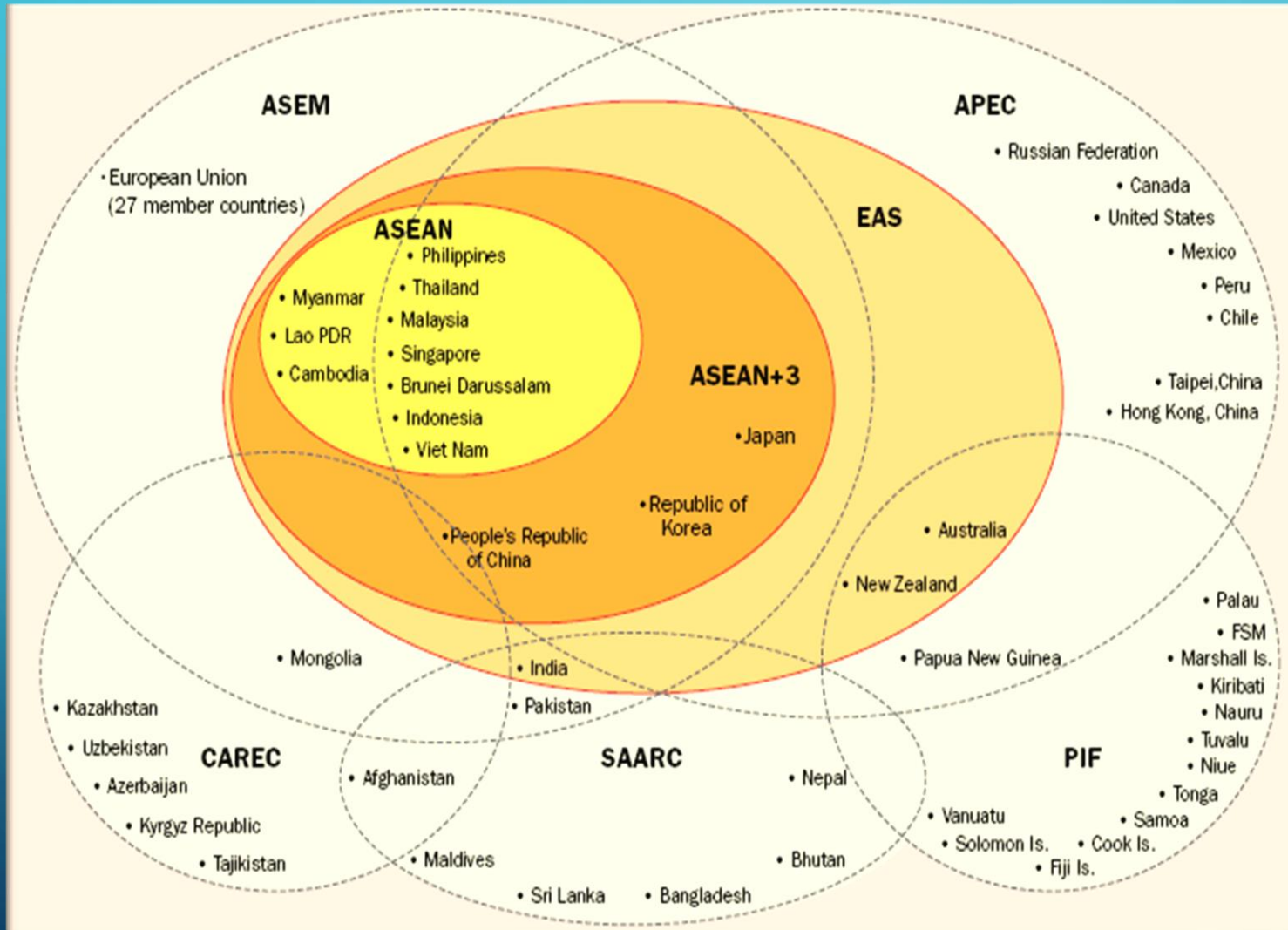
BUSWORLD SOUTH-EAST ASIA 2023

JAKARTA NOV 16, 2023



puryanto@gmail.com

ASEAN IN THE GLOBAL LANDSCAPE

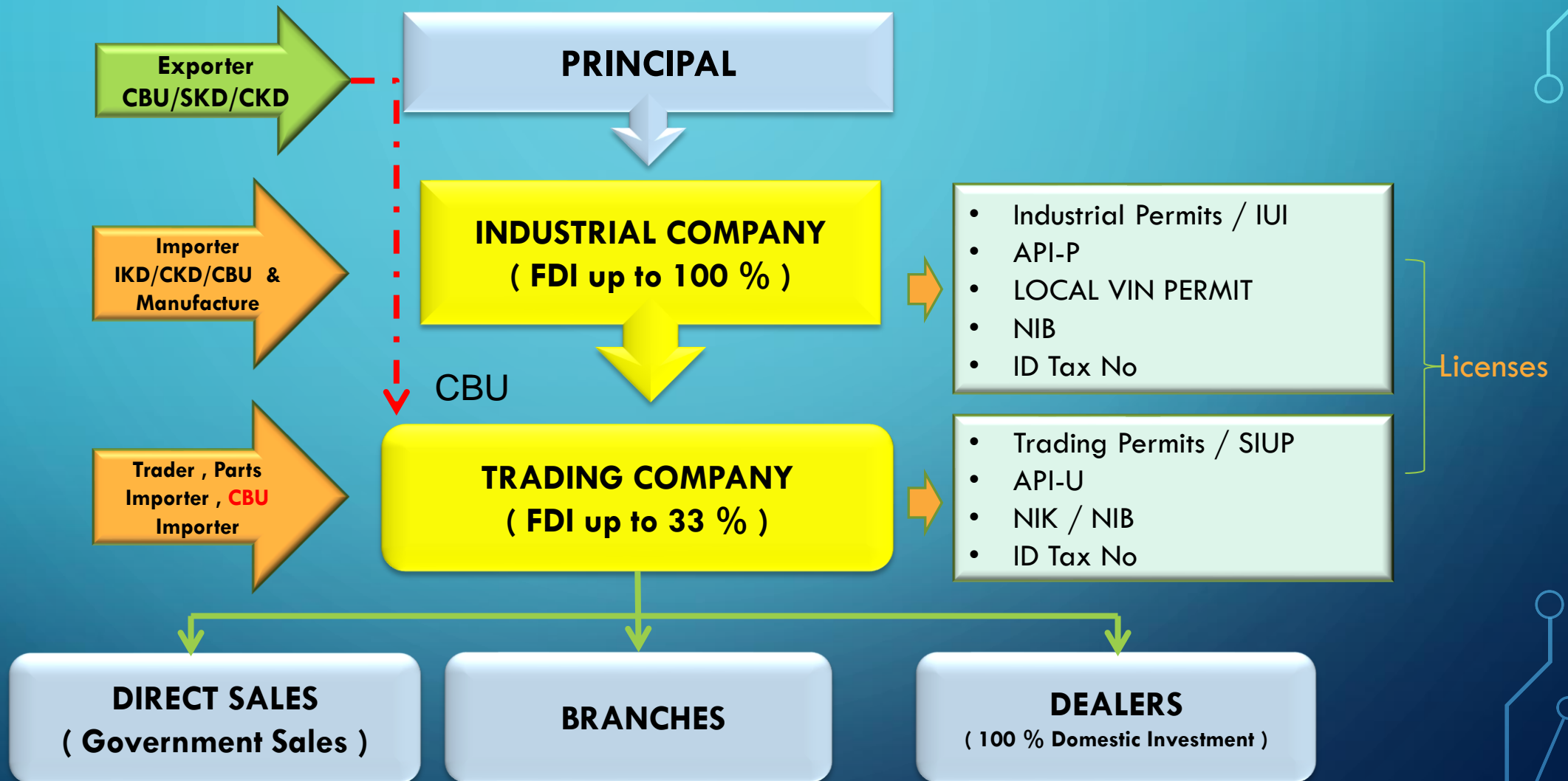


AIFTA

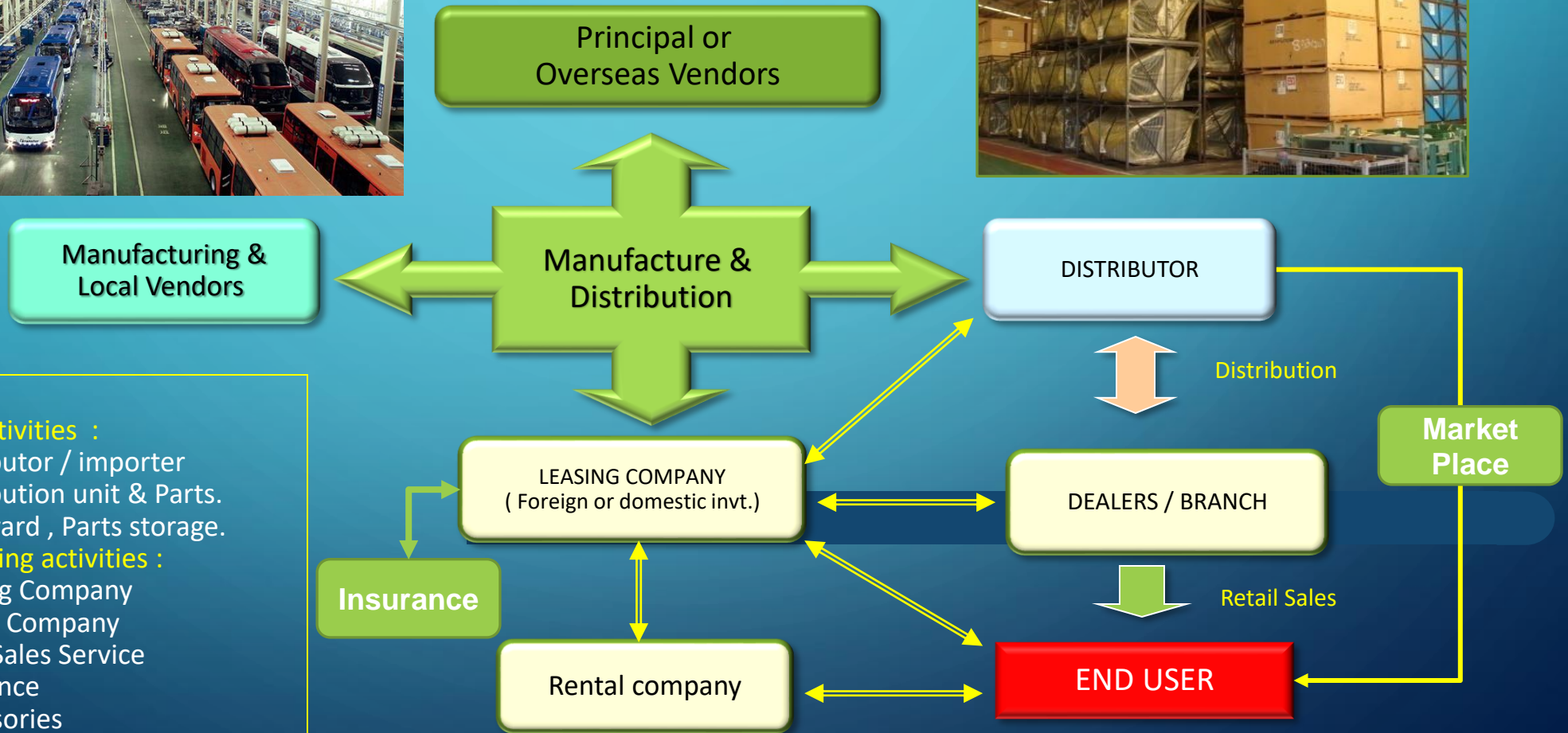
- Brand To Brand Complimentation.....
- Branch to Branch Complimentation.
- Decide Industrial Based for ASEAN territory.
- ASEAN market as a single market by type.
- Indonesia as location/production hub for Australia-New Zealand market...RHD type.

AIFTA EV Bus CBU 5% ÇKD 0%

AUTOMOTIVE MANUFACTURING & BUSINESS SCHEME



Manufacture & Distribution Ecosystem



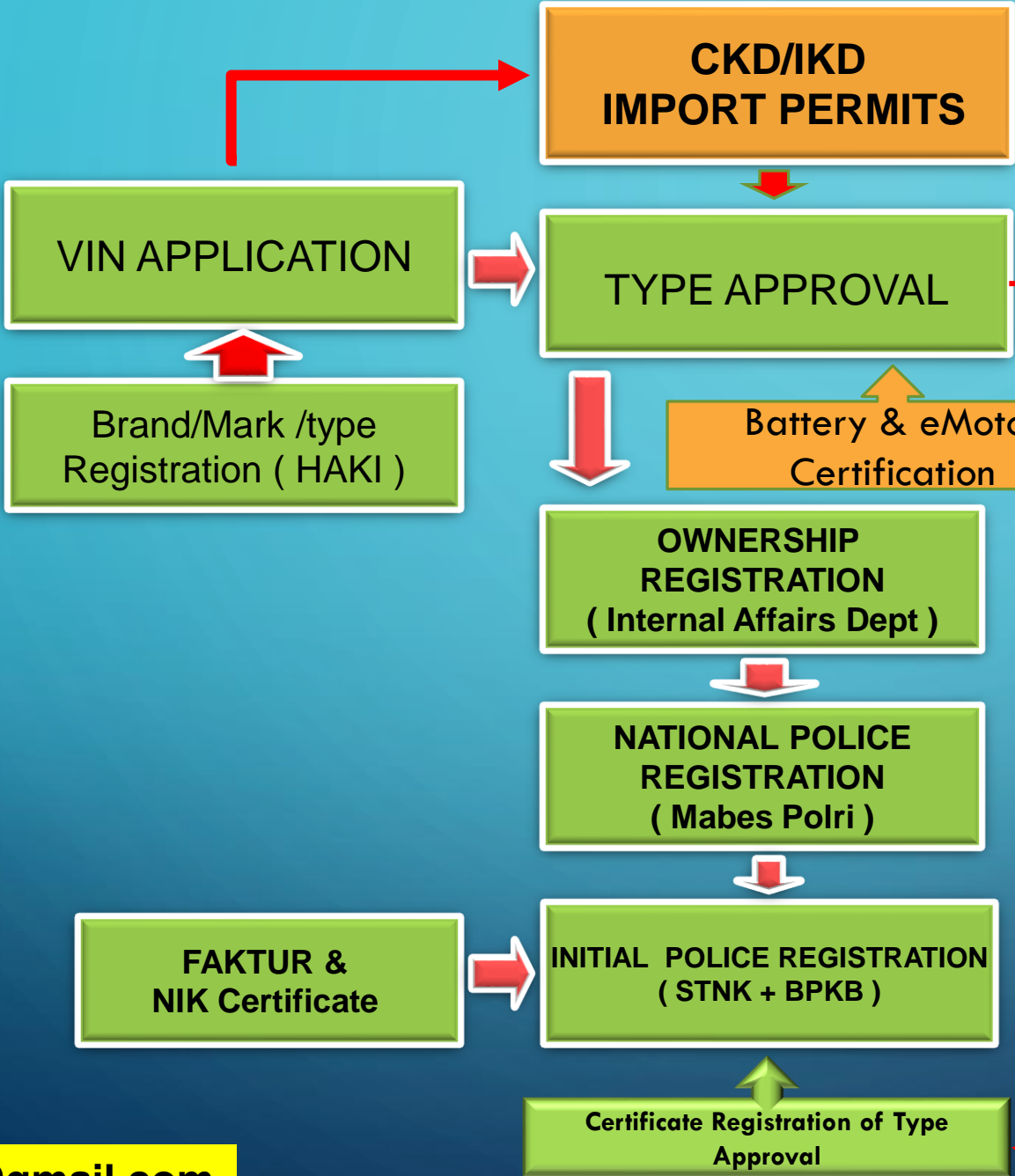
Note :
Main activities :

- Distributor / importer
- Distribution unit & Parts.
- Stockyard , Parts storage.

Supporting activities :

- Leasing Company
- Rental Company
- After Sales Service
- Insurance
- Accessories
- Logistic company

FLOW PROCESS TYPE APPROVAL & HOMOLOGATION PASSENGER CAR, MOTORCYCLE



MAIN COMPONENTS CERTIFICATION FOR EV

BATTERY LITHIUM & MOTOR



ACREDITATION STANDARD

- ❖ IEC, ISO, APAC, ILAC, CNAS, VCA, IDIADA,
 - ❖ SNI ; KAN (INDONESIA)
 - ❖ **CHATdeMO** , **CCS-2**, ISO, **GBT**
- Standard plug in port.

RELATED SUPPORTING DOCUMENTS

1. Original brochure, every type.
2. Detail Technical-Specification, every type.
3. Copy Homologation test from principal (origin country), every type.
4. Copy certificates of Battery Lithium & eMotor.
5. Breakdown VIN numbering system (17 digits)
6. FOB Price statement letter.
7. Guarantee Letter of the After Sales Service.
8. Letter Of Bank Reference.
9. Workshop Certification from Succofindo.

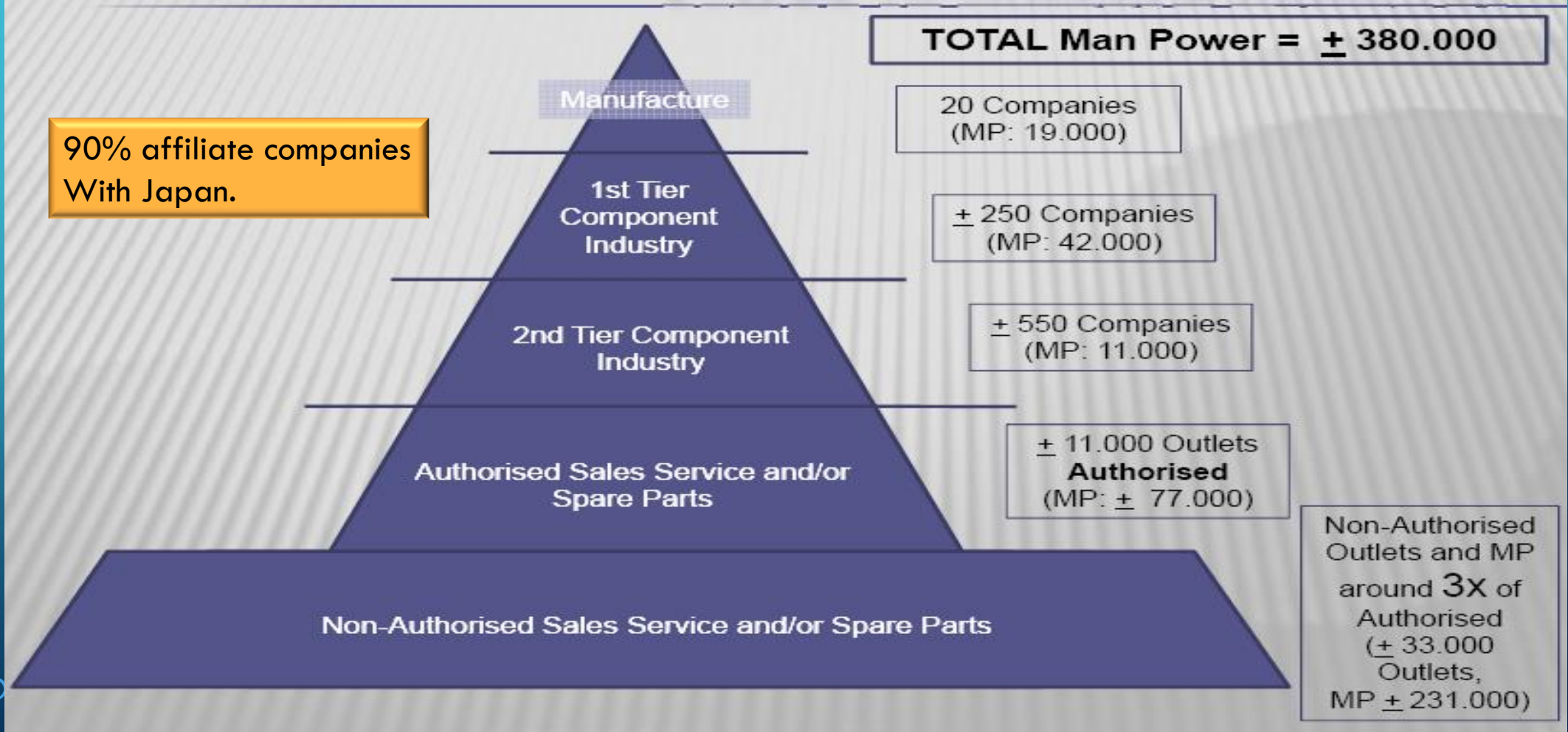
CKD-HOMOLOGATION TIME-SCHEDULE

NO	Description	M1	M2	M3	M4	M5
01	LOCAL VIN APPLICATION <ul style="list-style-type: none"> • Brand Registration copy • Contract Assembly copy from 3rd party or own manufacturing. • VIN Structure ...principal 	█				
02	CKD/IKD Importation Permits (SIINas) <ul style="list-style-type: none"> • Importer Approval Registration • Import Permit 		█			
03	CKD initial Import, Sample Assembly, Trial assembly, Internal Test & Improvement request if any .		█			
04	Type Approval through VTA Online <ul style="list-style-type: none"> • Battery Lithium Certificate... principal • Electric Motor Certificateprincipal • Charging test on the vehicle 			█		
05	Initial SRUT after Type approval.				█	
06	Internal Affairs Registration for ownership , NJKB				█	
07	Speciment registration and type registration at National Police <ul style="list-style-type: none"> • Sample of Local VIN Certificate • Faktur / Ownership form registration 				█	
08	Initial License plate application. <ul style="list-style-type: none"> • Electric Vehicle License Plate No 					█

AUTO INDUSTRY CLUSTER

4

CAR (4 WHEELS VEHICLE)



MOTORCYCLES COMPONENT MADE BY GIAMM MEMBERS

BEV NEED FAMILY TREE

Dies, Jig

1. PT Dharma Precision Parts
2. PT Metindo Era Sakti
3. PT Pamindo Tiga T Kamajaya Sentosa

Shock Absorber

1. PT Kayaba Indonesia
2. PT Showa Indonesia

Carburator

1. PT Keihin Indonesia

Brake System

1. PT Chemco Harapan Nusantara
2. PT Danmotors Indonesia
3. PT Eka Swastya
4. 5. PT Tri Dharma Wisesa
6. PT Yutaka Manufacturing Indonesia

Control Cable

1. PT Dharma Control Cable Indonesia
2. PT FSCM Manufacturing Indonesia
3. PT Hi-lex Indonesia
4. PT Hilex Parts Company

Engine Parts/Assy

1. PT Astra Honda Motor
2. PT Astra Otoparts Div. Nusa Metal
3. PT Danmotors Indonesia
4. PT Dharma Precision Parts
5. PT Edico Utama
6. PT Federal Izumi Manufacturing
7. PT Federal Nittan Industries
8. PT FSCM Manufacturing Indonesia
9. PT Kawasaki Motor Indonesia
10. PT Musashi Auto Parts Indonesia
11. PT Pakarti Riken Indonesia
12. PT Pricol Surya
13. PT WIKA In-Trade
14. PT Yamaha Indonesia Motor Mfg.

Filter

1. PT Denso Indonesia
2. PT FSCM Manufacturing Indonesia

Gasket

1. PT Fuboru Indonesia
2. PT NHK Gasket Indonesia
3. PT Nichias Leakless Telison Gasket Mfg.
4. PT Partuni Perdana

Muffler

1. PT Danmotors Indonesia
2. PT Dharma Polimetal
3. PT Waja Kamajaya Sentosa
4. PT Yutaka Manufacturing Indonesia

Body/Pressed And Plastic Part

1. PT Astra Honda Motor
2. PT Asta Otoparts Div. Adiwira Plastik
3. PT Danmotors Indonesia
4. PT Dharma Polimetal
5. PT Inti Polymetal
6. PT Kawasaki Motor Indonesia
7. PT Kyoda Mas Mulia
8. PT Metindo Era Sakti
9. PT Pema Meta Presindo
10. PT Subur Djaja Teguh
11. PT Waja Kamajaya Sentosa
12. PT Yamaha Indonesia Motor Mfg.



Rubber Parts

1. PT Indokarlo Perkasa
2. PT IRC Inoac Indonesia
3. PT Pong Codan Indonesia

Wheel Rim

1. PT Astra Honda Motor
2. PT Dharma Polimetal
3. PT Excel Metal Industri
4. PT Pakoakuina

Speedometer

1. PT Indonesia Nippon Seiki
2. PT Indo VDO Instrument
3. PT Pricol Surya

Spark Plug

1. PT Denso Indonesia
2. PT Multi Prima Sejahtera
3. PT NGK Busi Indonesia

Wiring Harness

1. PT Cipta Mandiri Wirasakti
2. PT Dharma Electrindo Mfg.

Electrical Component

1. PT Indoniles Electric Parts
2. PT Indonesia Stanley Electric
3. PT Keihin Indonesia
4. PT Jideco Indonesia
4. PT Kyoda Mas Mulia
5. PT Mitsuba Indonesia
6. PT Minda Asean Automotive
7. PT Toyo Denso Indonesia
8. PT Toyonaga Indonesia

Seat

1. PT IRC Inoac Indonesia
2. PT Meiwa Indonesia

Accessories

1. PT 3M Indonesia

Bearing

1. PT SKF Indonesia

Tools

1. PT Menara Terus Makmur
2. PT Waja Kamajaya Sentosa

Battery

1. PT GS Battery
2. PT Trimitra Baterai Prakasa
3. PT Tri Mega Baterindo
4. PT Yuasa Battery Indonesia

Others

1. PT Chuhatso Indonesia
2. PT Garuda Metalindo
3. PT Garuda Metal Utama
4. PT Hankook Casting Indonesia
5. PT Indospring Tbk.
6. PT Indowire Prima Industrindo
7. PT 3M Indonesia
8. PT Jakarta Martenlogamindo
9. PT Kyoda Mas Mulia
10. PT Morita Tjokro Gearindo
11. PT Pema Meta Presindo
11. PT Subur Djaja Teguh
12. PT Waja Kamajaya Sentosa
13. PT WIKA In-Trade

BEV COMPONENTS



BLDC/PMSM



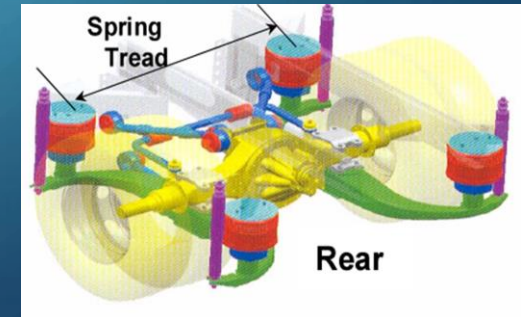
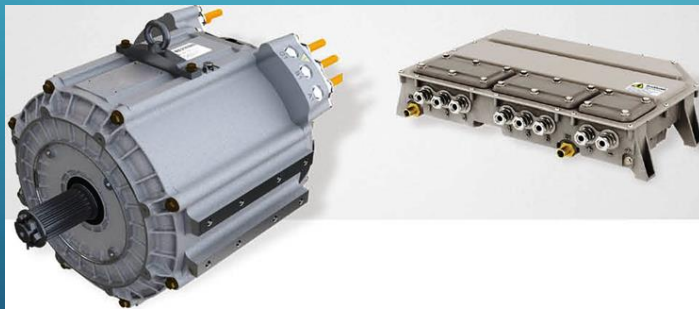
Hub drive Motor
BLDC



Motor Controller



BATTERY PACK



LIST OF SNI COMPONENTS

- Importer should submit the SNI Certificate for every parts imported with multi HS Code.
- Overseas Manufacturer should apply the SNI certificate to Industrial Dept of Indonesia.
- There is no need SNI certificate in case import of the CKD vehicles set or IKD condition with single HS Code of the whole car.

- **Tyre and Wheels up to 20" wheel Rim.**
- **Glasses (Laminated or Tampered)**
- **Control Cable of Brake, Accelerator.**
- **Car-Carpet.**
- **Lead Acid Battery (6, 12, 24 Volts)**
- **Etc**

AUTOMOTIVE TAX & COMPANY TAX

PURCHASING VEHICLES TAXATION

CORPORATE TAX

National Tax
(MoF Income)

Import Tax (CBU)
Income tax PPh 22

CBU 5 – 50 %
2.5 – 10 %

Luxury Tax
Tax amount is different based on
body type, Fuel Type, Emission
grade, Axle configuration.

10 – 95 %
(EV 0%)

VAT
All vehicle taxed in constraint
ratio 11 %

11 %

Municipal Tax
(Local Gov.
Income)

Automotive Registration Tax
(BPKB & BBN)
Tax ratio is different based on
region and number of unit

12 - 17 %
(EV 0 – 17 %)

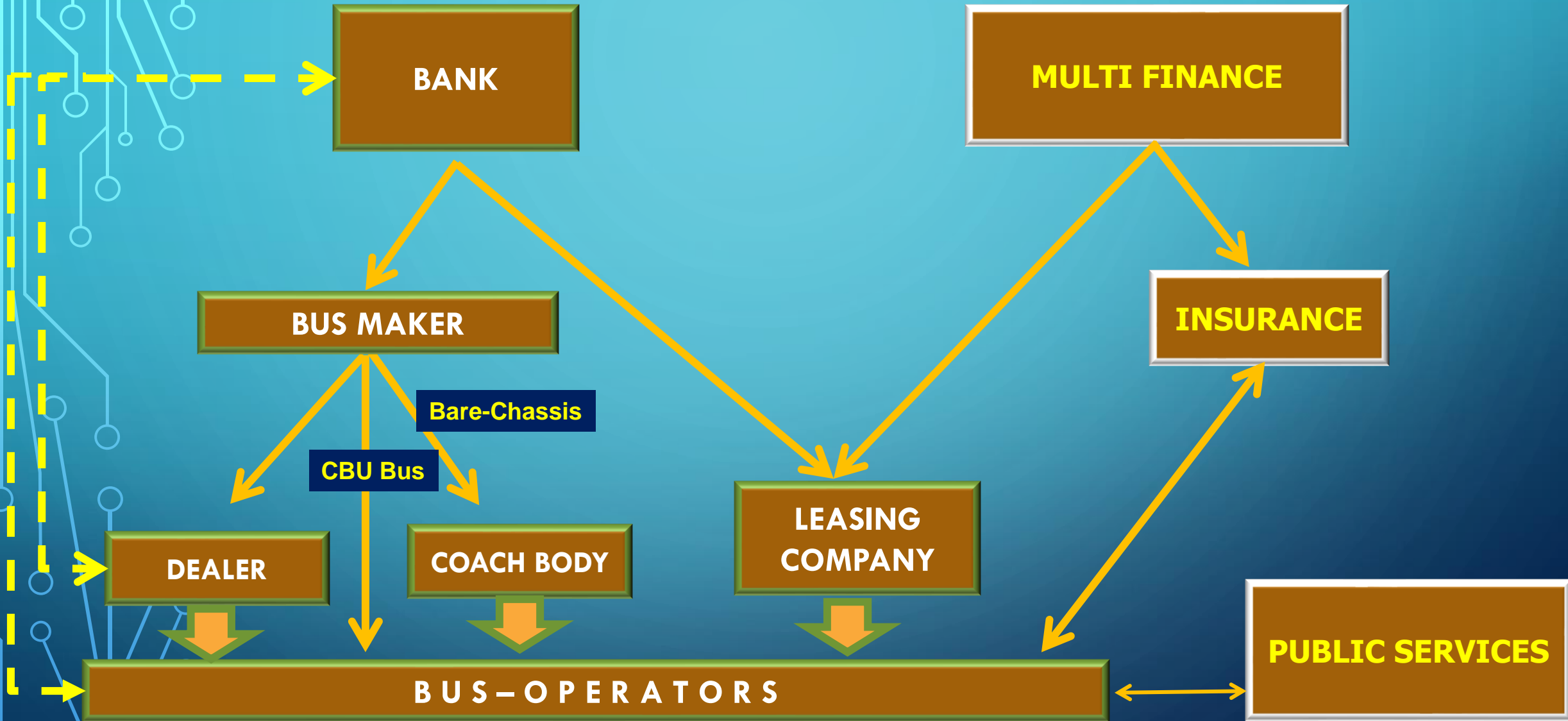
Not Available

Annual tax decided based on two main factors :

1. Vehicle Sales Price.
2. Road damage, environment factor
 - Vehicle weight
 - Fuel Type
 - Vehicle type, made year, engine type

- First ownership
1 – 2 %
- Second ownership
2 – 10 %

CITY BUS FINANCIAL SCHEME



BUSINESS DEVELOPMENT RELATED TO EV IN INDONESIA

- **Car distribution method beside appointed new Dealership also may set up through Market Place for Sales and Rental.**
- **Multi Finance for New Car and EV Conversion, priority state own companies.**
- **Energy Business (Battery Swap, Public chargers, Fleet Customer Charging Services , Energy Storage or Smart Grid Energy (Hybrid with renewable energy) also payment system.**
- **Laboratory Test and certification for Battery Lithium and Electric Motor.**
- **EV car manufacturing, including OEM Components.**
- **Upstream material processing from mining of Nickel, Mangan, Cobalt, Aluminium, Cupper up to finish good of Battery pack and Electric Motors.**

CONCLUSION

- **Entry Indonesia market through components manufacturing or Assembly the EV Bus Chassis + cooperation with Indonesia Coach Body Builder, so that the product may obtain the Local Contents Certification for Government bidding.**
- **Set Up Leasing Companies which Supported by India's Bank to support EV Sales and Distribution.**
- **Doing Market survey , FS and dispatch taskforce team before set up new companies, and establishing manufacture.**
- **Decide Indonesia as manufacturing based for RHD market in ASEAN and Australia - New Zealand and optimize Regional Contents more than 40 %.... And the export product can be provided COO.**

The background features a light blue and white color scheme with a pattern of concentric circles. In the center, there are several stylized, semi-transparent figures of people in business attire, each carrying a large box or briefcase on their head. The figures are walking in various directions. The corners of the image are decorated with colorful, abstract lines and shapes in shades of red, orange, yellow, green, and blue, resembling a network or data visualization.

Thank You

puryanto@gmail.com